



# INNOVATION



# POWER TOOLS



## Hand Tools

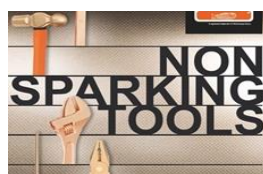
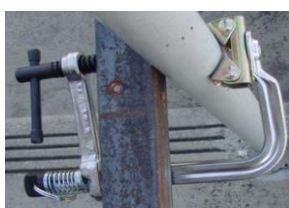
Do It Yourself !! Our Hand tools collection for any maintenance work Home - office - Factory



# MW TOOLS

MAKE IT EASY

### PRODUCTS SEGMENTS CATALOGUE



# HYDRAULIC TOOLS



**Pneumatic  
Tools**



**SOLUTION**

## **WHY MW TOOLS....?**

- *We understand your need and requirement and offer you best solution for your application.*
- *Suggesting Number of Options for Better Solutions with Best Price*
- *Innovative solutions to reduce maintenance time and cost*
- *Special tools availability and Unique designed tools of most popular brands under one roof.*
- *We offer you no regret and universal price*

## **CONTACT DETAILS**



**MW TOOLS**

**A/S-2, Indrapuri, Opp to BHEL JUBLEE GATE**

**BHOPAL- 462021**

**Mukul Wagadre**

**+91-9087805167 | 0755-4911579**

**[sales@mwtools.in](mailto:sales@mwtools.in) , [info@mwtools.in](mailto:info@mwtools.in)**

**[www.mwtools.in](http://www.mwtools.in)**



**Branch Office:** MR-10, 132 Vijaynagar, INDORE (M.P.)- 453555  
 Mob: +91-6264743219 / 9087805167

**SPANNERS /  
WRENCHES:-**

ITEM NO.	SIZE (mm)	L (mm)	B (mm)	D (mm)	S1 (mm)	S2 (mm)
ABAD0811	8x11-10x9	150	19.9	21.7	13.8	14.6
ABAD1215	12x15-14x13	190	26.7	29.7	17.1	18.0
ABAD1619	16x19-17x18	230	31.5	33.7	20.2	21.9
65104	14x17-19x21	270	38.0	42.0	19.0	26.0
65105	17x19-22x24	330	41.0	50.0	20.0	30.0
65106	19x21-24x27	330	42.0	50.0	21.0	30.0

**4in 1 Ratchet Spanner :**

- Chrome Vanadium Steel Material
- Two-way reversible gear design for quick and easy fastening and loosening works
- 72 teeth ratchet mechanism, 5° increments
- High torque & durable ratcheting performance
- Satin Chrome Finished
- In accordance to DIN ISO 691, DIN ISO 1711-1, ASME B107.100



**TOPTUL®**  
 THE MARK OF PROFESSIONAL TOOLS

**EGA Master**  
 ART IN INNOVATION  
 EGA-Master, Spain

**Open End Ratchet Wrench :**



Application

**TOPTUL®**  
 THE MARK OF PROFESSIONAL TOOLS

**EGA Master**  
 ART IN INNOVATION

ITEM NO.	SIZE (mm)	L (mm)	B (mm)	D (mm)
AEAT1010	10	156	32.0	7.0
AEAT1111	11	156	32.5	7.0
AEAT1313	13	156	32.7	7.0
AEAT1717	17	210	35.0	8.0
AEAT1919	19	212	37.6	8.0
AEAT2222	22	220	41.1	11.0
65099	24	230	39	11.0
65100	27	320	49	13.0
65102	32	320	50	18.0

**Flexible Ratchet Combination Wrench/Master Gear**



ITEM NO.	SIZE	L	B	D
----------	------	---	---	---

	(mm)	(mm)	(mm)	(mm)
63818	8mm	140	10	20
63819	9mm	140	10	20
63820	10mm	160	12	24
63821	11mm	175	14	26
63822	12mm	190	15	30
63823	13mm	190	16	30
63824	14mm	210	17	31
63825	15mm	210	17	31
63826	16mm	230	19	37
63827	17mm	230	20	37
63828	18mm	250	21	41
63829	19mm	250	21	41
63830	21mm	260	22	44
63831	22mm	260	23	44
63832	24mm	270	26	50
63930	27 mm	290	26	55
63931	30 mm	320	32	60
63932	32 mm	390	36	65

## SPANNERS / WRENCHS / RATCHET HANDLE



**COMBINATION WRENCH AAEX Series**  
5.5 to 32mm

- Industrial DIN Standards
- Chrome Vanadium Steel Material



**OPEN END WRENCH**  
4 to 60mm



**RING WRENCH**  
5.5 to 32mm



**Reversible ratchet Combination Wrench ABAF**  
8 to 24mm



**Half-Moon Wrench**  
8 to 22mm



**Double Socket ratchet Wrench AEAH**  
10x12 to 50x55mm



**Slogging Open Wrench** 17 to 200mm



**Flat Type Extra Long Double Ring Wrench**



**Double Ring Ratchet Wrench**

## SPECIAL WRENCH / SPACE CONSTRAINTS TOOLS



**STUBBY RATCHET WRENCH**  
8 to 19mm



**HOOK SPANNER**  
Range: 35-35 to 120-180mm



**Angled Socket Wrench**



**Dual drive Ratchet Handle**



**Dual Ratchet Sq Drive & Bits driver**



**Telescopic Ratchet handle 1/2"**

3/8" x 1/4" & 1/2 x 1/4"

1/4" Shank x 3/8" Sq Drive



Flexible Ratchet handle 1/4", 3/8", 1/2"



Double ratchet Wrench 8 to 21mm



Ratchet handle 1/4", 3/8", 1/2"



Angle Driver



F. drive Ratchet handle

## SOCKETS/FLEXIBLE/SPACE CONSTRAINTS

6pt Flank Socket



Socket BAEA (metric/SAE/Inch)  
Sq Drive: 1/4", 3/8", 1/2", 3/4", 1"  
Sizes: 4 to 80mm



Deep Socket BAEF (metric/SAE/Inch)  
Sq Drive: 1/4", 3/8", 1/2", 3/4", 1"  
Sizes: 6 to 32mm



Swivel Head Socket 1/4 to 1"



Adapter CAEA  
1/4 F x 3/8" M  
3/8" F x 1/4" M  
3/8" F x 1/2" M  
1/2" F x 3/8" M  
1/2" F x 3/4" M  
3/4" F x 1/2" M  
1" F x 3/4" M



Multi-Size Socket  
3/8" Sq drive: 7 to 19mm  
1/2" Sq Drive: 11 to 32mm



Flexible Wrench  
For bits shank – 1/4"  
For Sockets – 1/4", 3/8", 1/2"



Insert Sockets



Allen Hex/Ball/Torx mini & long Sockets



Bit Sets with Extension



SOCKET SET / BIT SOCKET SET / TOOL BOX SET with ACCESORIES



## ALLEN KEY / T-Handles / SCREW DRIVERS



Hex Key Short type  
Size: 1.27 to 19mm  
Length: 45 to 199mm



Hex Key Long type  
Size: 1.5 to 19mm  
Length: 63 to 299mm



Hex Key Extra Long Type  
Size: 1.5mm to 19mm  
Length: 91 to 379mm



Ball Point  
Size: 1.5 to 12mm  
Length: 63 to 262mm



Spline Key  
Size: M5 to M14  
Length: 83 to 155mm

\*Available in Long & Extra Long Length



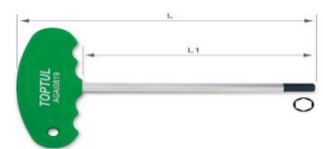
Star Tamperproof Key  
Size: T10 to T50  
Length: 91 to 226mm



Individual Size Key's



Foldable Allen Keys  
Hex / TORX / STAR



T-Handles Hex 150mm  
Size: 2 to 10mm 1/8 to 3/8



T-Handle Ball Point  
Size: 2 to 12mm  
Length: 77 to 116mm



T Type Extra Long Allen Hex  
Size: 2 to 10mm  
Length: 200 to 4000 mm

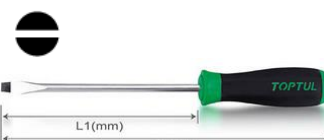
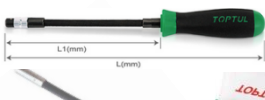


L Type Magnetic Bit Holder  
Shank: 1/4"  
Length: 203mm



SS Allen Hex Key Set

**[SPECIAL]**



**[SPECIAL]**



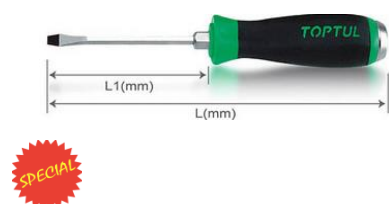


**Flexible Bit Holder 1/4"**  
 L = 290mm  
 L1= 175mm

**Nut Spinner**  
 Size: 4 to 13mm  
 L = 250mm

**Slotted Screw Driver**  
 Length: 100 to 400mm

**19 in 1 Ratchet Screw Driver**  
 Type: Star, Hex, Torx



**Go through Slotted Screw driver**  
 With Cap with Hex Shoulder



**Short & Long Hex Bits & Sockets**  
 (Customized Sizes also available)



**8in1 pistol grip**  
 Ratchet Screw driver

BRANDS:

**TOPTUL**  
 THE MARK OF PROFESSIONAL TOOLS

**EGX Master**  
 ART IN INNOVATION

**POWERMASTER**  
 BUILT TO LAST

**JTECH**  
 TOOL

## PLIERS / STRIKING TOOLS



**Combination Plier**  
 Size: 6 to 8 inch



**Long Lose Plier 6 & 12"**



**Cutting & Stripping Plier 6"**



**Pincers 8 & 10"**



**Groove Plumbing Pliers**



**Gripper Plier**



**Circlip Plier**  
 Straight / Bent



**Wire Rope Cutter for:**  
 4mm wire rope / 1.5mm spring wire



**Locking Ring Plier**  
 Length: 12"



**Adjustable Hex Wrench**  
 Size: 7-14mm/ 12-20mm



**Manual Crimping Tools**



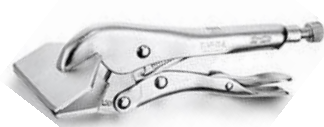
**Locking Chain Clamp**



**Parrot nose Locking Plier 9"**



**C-Clamp Locking Plier 6 to 18"**





Fibre glass Hammer 500grms.

Soft Face Hammer  
PU & Nylon 35mm diaDead Blow Hammer  
up-to 4 lbs

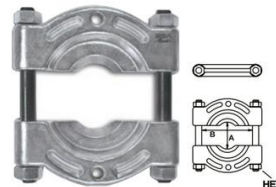
Cu/ Brass-Al hammer

Soft Face  
Hammer

Chisel Punch Set



Scrappers



Bearing Separators



3 Legs / 2Leg Pullers

## BRANDS:

**TOPTUL®**  
THE MARK OF PROFESSIONAL TOOLS

**EGA Master SA**  
ART IN INNOVATION

**JTECH®**  
TOOL

**TORQUE WRENCHES**

Ratchet Torque Wrench 5 to 1000Nm



Digital Torque Wrench



Torque Adapter

Torque  
Extension

## Feedback/Signal Torque Wrench



Calibration certificate  
Reversible /  
Teeth = 36/48  
Warning system : Audible and light alarm  
Cd with the programs for data communication  
Web calibration  
Batteries : AA x 2  
Battery operation time: 110 h  
Operating temperature : -10°C - 60°C

Torque Wrench 3000Nm  
Ratchet Type/Light Weight

COD		N.m	Lb.ft	Lb.in	Kg.cm	
62955	1/4"	1.5-30	1-22	13-265	15-306	390
62956	3/8"	6.8-135	5-100	60-1195	69-1378	415
62957	1/2"	10-200	7-148	88-1770	102-2041	530
62958	3/4"	17-340	12-251	150-3009	173-3469	650
67685	1"	25-500	18,4-368,7	221-4424	255-5102	950
67686	1 1/4"	42,5-850	31,3-626,8	376-7521	434-8674	1220
67688	1 1/2"	75-1500	221-1106	-	-	1800
62959	1/4"	1.5-30	1-22	13-265	15-306	390
62960	3/8"	6.8-135	5-100	60-1195	69-1378	415
62961	1/2"	10-200	7-148	88-1770	102-2041	530
62962	3/4"	17-340	12-251	150-3009	173-3469	650
67721	1"	25-500	18,4-368,7	221-4424	255-5102	950
67722	1 1/4"	42,5-850	31,3-626,8	376-7521	434-8674	1220
67724	1 1/2"	75-1500	221-1106	-	-	1800

COD		N.m	Lb.in	Lb.ft	
62951	1/4"	2.5-12	20-105	-	290
62952		4-20	30-180	-	
65871		-	35-180	-	230
62965	3/8"	6-30	50-250	-	320
65872		-	120-450	-	380
62953		25-125	-	20-90	440
62954	1/2"	-	350-1800	-	
65873		40-200	-	30-150	460
62963		65-335	-	50-250	520
62968	3/4"	-	1000-3000	-	
65918		160-800	-	120-600	
62969		-	1000-7200	-	1040
65919	1"	200-1000	-	150-750	
62976		300-1500	-	200-1100	
62977		400-2000	-	300-1500	1250
62978		600-3000	-	400-2200	
62979					





- Screw Driver With Digital Torque Display
- 0.4 to 5Nm Range
- 5-6 yrs battery life with Auto Switch Off
- Slip-Type Screw Driver



Torque Screw Driver



**[SPECIAL]**

Digital Torque Screw-Driver



Interchangeable Head Torque Wrench



Torque Multiplier



Hydraulic Torque Wrench up to 65,000 Nm

## :: "CALIBRATION OF TORQUE TOOLS WITH CERTIFICATES"

BRANDS:

**TOPTUL**  
THE MARK OF PROFESSIONAL TOOLS

**EGA Master** S.A.  
ART IN INNOVATION

**POWERMASTER**  
BUILT TO LAST

**E-TECH**  
TOOL

## TOOL STORAGE / TROLLEY / MATERIAL HANDLING



Waist Tool Bag



Metal / PU Tool Box



TOOL STORAGE & TROLLEYS



TOOL TROLLEY



WORK Bench / Display / Cabinets

Cylinder Trolley with Auto-Rewind Hose



PIPE TOOLS & VICES  
SINCE 1896

## Reed: Pipe Tools & Vices

### QUICK RELEASE TUBING CUTTERS FOR PLASTIC

Capacity: 3 -33 to 159 -254 mm (Pipe OD)



### INTERNAL PIPE CUTTER

Blade Type	Blade Diameter		Blade Cutting Depth		Shaft Size
	in	mm	in	mm	
abrasive	1.53	38.8	.50	13.0	4"
saw tooth	1.26	32.0	.38	9.6	4"
saw tooth	1.26	32.0	.38	9.6	7"
saw tooth	0.75	19.0	.13	3.18	6"



## PE SCRAPER

### FEATURES

- One tool does a range of pipe 1 1/2" - 6".
- Takes 2 minutes to attach to pipe and scrape 6" PE.
- Creates a **uniformly** scraped surface.
- Works well even on out-of-round pipe.

PE Scraper prepares the outside diameter of PE pipe for electrofusion by removing the oxidized layer and contaminates. Spring-loaded blade keeps consistent pressure on the pipe for a smooth finished surface. This blade tension means the blade does not skip. Updates include smoother-riding ball bearing wheels and a revolving handle which allow the scraper to be rotated in one continuous motion. Also, new roller chain tensioning system allows for more forgiveness on out-of-round pipe. PE Scraper can be used on the edge of the pipe or anywhere along the pipe with sufficient 5 1/2" (142 mm) clearance for turning the tool around the pipe.

Catalog No.	Item Code	Pipe Capacity		Weight	
		in-nom.	actual O.D. mm	lbs	kg
PESCRAPER2	04631	1 1/2 - 6*	48 - 168	3.1	1.4

\*O.D. must be 1.9" or more

PESCRAPER2  
in use



PESCRAPER2





## GUILLOTINE PIPE CUTTERS

### FEATURES

- **Squarest cut** available for PE due to strong frames and unique blade design.
- Saves facing cost: no facing needed for electrofusion, less needed for butt-fusion.
- Requires minimal clearance, only 4" - 6" (102 - 152 mm) around pipe.
- **Clean and safe!** No chips to clog valves and apertures.
- Many **high quality cuts**, with durable non-stick coated, tool steel blade.

Robust Guillotine Pipe Cutters are designed to cut PE pipe thicker than SDR17 within 1/8" (3 mm) of square on medium and high-density pipe. **HPC12** is designed for DIPs and IPS PE pipe from SDR17 to SDR9.3. Brass bushings in HPC12 crosshead feed assembly yield smooth feed and more consistent blade alignment. The accurate cuts from Reed Guillotine Cutters mean no facing is needed for electrofusion and only minimal facing for butt fusion joints. Durable, non-stick coated blade makes many square cuts with no chips to clog valves and small openings. Slight taper on blade allows an easy start to the cut, and holds form for a nice, straight cut. Blades are easy to sharpen or replace.

*NOTE: Reed strongly recommends use of the [GROUNDING ACCESSORY ON P. 35](#) with Guillotine Cutters. Use a grounding accessory as a precaution against static build-up. Dissipate the charge and minimize the possibility of ignition.*

Catalog No.	Item Code	Capacity		Length		Weight	
		in-nom.	actual O.D. mm	in	mm	lbs	kg
HPC4	04604	2 - 4	63 - 125	19	482	15.6	7.1
HPC8	04608	3 - 8	90 - 225	30	750	35.0	15.9
HPC12	04612	4 - 12	114 - 350	51	1295	100.0	45.5

### REPLACEMENT BLADES

Catalog No.	Item Code	Description
HPC4B	40329	HPC4 Blade
HPC8B	40027	HPC8 Blade
HPC12B	94903	HPC12 Blade

*NOTE: HPCs cut PE only and will not cut PVC or PP (polypropylene) pipe, such as Aquatherm®.*

**BEST EVER!**

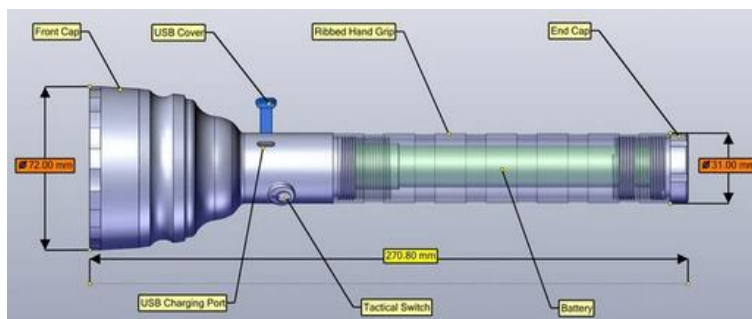
Smooth Feed on Crosshead Feed Assembly

**HPC12**  
in use



## INDUSTRIAL FLASH LIGHTS / TORCH

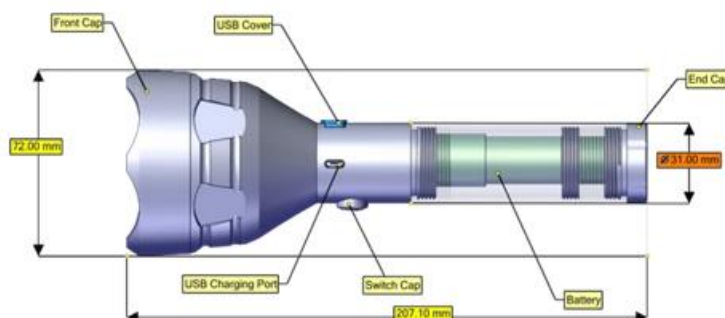
### ENLIGHT



### Features:

- MIL Grade CNC Machined Aluminium Body
- USB Charging
- 5200mAh Lithium Ion Battery
- 3 Operating Modes
- 15 Hours Run Time In Power Saving Mode
- 400 + Meters Throw

### TREKMATE



### Features:

- MIL Grade CNC Machined Aluminium Body
- USB Charging
- 2600mAh Lithium Ion Battery

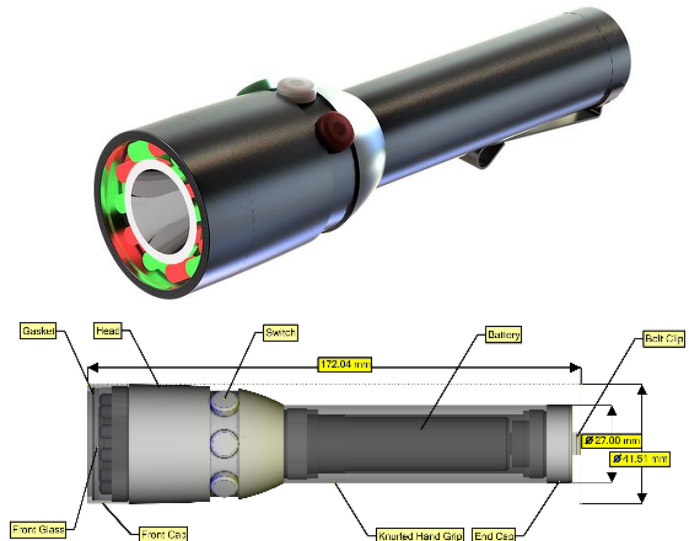


- 3 Operating Modes
- 3.5 Hours Run Time In Eco Mode
- ~400+ Meters Throw

## **BEACON (Tri-Color)**

### **Features :**

- MIL Grade CNC Machined Aluminium Body
- USB Charging
- 1800mAh Lithium Ion Battery
- 3 Operating Switches - Red -White -Green
- 8 Hours Run Time In Power Saving Mode
- 160 + Meters Throw



**"Comes with a Limited LifeTime Warranty Certificate"**



## **Balancer / Chain Blocks / Scaffoldings & Ladders**



**Spring Balancers Range: 2.5 to 70kgs**  
**Hose Spring balancer upto 30fts**



**Material Handling – Chain Blocks**

## **SCAFFOLDING TOWER**



- In Every 6-24 Meters Scaffolding Anti Skid ladders is provided in every 2 meters for convenience.
- Special straight braces are provide in-between H-frames for extra Safety & non-tilt able performance.
- This robust, lightweight, simple to assemble compact rolling tower is easy to transport.
- It has easy locking quick release snap grip couplings for the horizontal and diagonal for fast and easy assembly.
- Anti – Skid horizontal rungs provide additional safety while climbing & assembly.
- Platform with trapdoor and guard railings is ideal for working at heights.
- Additional stabilizers with triangular assembly and easy locking system provide additional stability to the tower.
- Maximum load per platform is 270kgs.
- Heavy duty Scaffolding Tower is made of aluminium wrought alloy with accordance to the scaffolding guidelines as per German standard

## LADDERS

- Available in 3.3m and 3.8m heights(open height) automatic locking and release rung by rung height adjustment. Treads lock automatically during extension extra wide treads for comfort and safety



**TELESCOPIC**



BRANDS:



## PNEUMATIC TOOLS: IMPACT / PULSE / RATCHET



**Nut Runner**



**Ratchet Wrench**



**Straight and Angle Grinder**



### IMPACT WRENCH – TOKU, JAPAN

Model	Drive (in)	Bolt Size (mm)	Torque Range (kg m)	Max Torque (kg m)	Net Weight (kg)	Overall Length (mm)
OZAR MI-1311B	3/8	10	3-7	10	1.3	150
OZAR MI-1310S	3/8	10	1-9	12	0.91	177
OZAR MI-12P(R)	3/8	12	5-11	12	1.2	150
OZAR MI-16M	3/8	13	5-15	23	1.5	170
OZAR MI-17M	1/2	16	25-45	R55 L60	2.5	179
OZAR MI-17C	1/2	16	26-56	R55 L70	1.8	181
OZAR MI-20P	3/4	20	40-80	100	3.9	309

### IMPACT WRENCH-TOKU, JAPAN

Model	Drive (in)	Bolt Size (mm)	Torque Range (kg m)	Max Torque (kg m)	Net Weight (kg)	Overall Length (mm)
OZAR MI- 3800 GL(RH)	1	38	50-150	200	10.2	504
OZAR MI-5000 GL(H)	1	50	50-220	270	16.0	594



**MI-5500**

- ✓ Impact Wrench 1.1/2" sq drive
- ✓ Torque Range: 1500-5500 Nm
- ✓ 17kg wt approx
- ✓ Heavy Duty Impact wrench

### Needle Scalers



- |                   |                    |
|-------------------|--------------------|
| ✓ Piston Dia 30mm | 20mm               |
| ✓ Weight: 2.2kgs  | 1.1 / 2.3kgs       |
| ✓ Stroke 30mm     | 12 / 25mm          |
| ✓ Length: 500mm   | 225mm              |
| ✓ Blow/min: 8000  | 12000/ 4000 / 3500 |

### HOIST and Flexible Material Handling Manipulator

- ✓ Handle mounted pendant for one-handed operation
- ✓ Precise variable speed control
- ✓ Left-handed operation by changing handle direction
- ✓ Failsafe automatic internal disc brake
- ✓ Durable cast iron housing (TMM-140AE) / Lightweight aluminium housing (TCR-250ME)
- ✓ Alloy safety swivel hooks with safety catch
- ✓ Chain Fall: 1, Lifting Capacity: 140 kg, weight: 10kgs, Hose Size: 10mm



Pulse Wrench



Hammer



Chisels



Drill

JAPAN **TOKU** 

 **KUKEN**

 **DreBon®**

**EGA Master**  
ART IN INNOVATION

## HYDRAULIC TOOLS

POWER PACK



ELECTRIC Mono-Port



ELECTRIC Quadra-Port



PNEUMATIC Mon-Port



PNEUMATIC Quadra-Port

HYD. TORQUE WRENCH



Square Drive Hyd. Torque Wrench



Low Clearance Hyd Torque Wrench



HYDRAULIC JACKS



Hand Operated Hyd Jack



Capacity: up-to 1200T



Threaded Ram



Low Height Jack 200T



Hand Operated Pump





Hydraulic Puller Set



Hyd. Crimping Tool

Hyd. Nut Splitter

Lifting Wedge

Hydraulic Puller

## POWER / CORDLESS TOOLS

Cordless Drill Driver  
torque 3 to 150NmCordless Grinder 18V  
9100 rpm, 115mm

Nibbler Cutter



Power Drill/Hammer Drill

**EGA Master**  
 ART IN INNOVATION

**POWERMASTER**  
 BUILT TO LAST

**BIG BULL**  
 JACKS

**Makita**
**BLACK+DECKER**

## ELECTRIC AUTO SHUT-OFF SCREW DRIVER

**ASA**  
 Ergonomics Electric Screwdrivers


起子機型 Model		扭力範圍 Torque range		適用電源控制器 Available controller	無載轉速(±10%) No Load Speed (rpm)	
槓桿式 Lever start	下壓式 Push to start	Kgf-cm	lbf-in		Lo	Hi
高效能小型無刷馬達電動起子		High efficiency brushless motor low torque electric screwdriver				
BS-S050		0.15~0.50	0.13~0.43	APS-201A	100	200
BS-S100		0.50~1.00	0.43~0.87	APS-201A	100	200
BS-100		0.15~1.00	0.13~0.87	APS-201A	100	200

ASA-7000	ASA-7000(PS)	7.00~20.0	6.10~17.4	APM-301B AM-65	400	700
ASA-7500	ASA-7500(PS)	7.00~30.0	6.10~26.0	APM-301C AM-85	500	1000
ASA-8000	ASA-8000(PS)	12.0~30.0	10.4~26.0	APM-301B AM-65	350	550
ASA-8500	ASA-8500(PS)	12.0~40.0	10.4~34.7	APL-301B	650	750
ASA-9000	ASA-9000(PS)	20.0~50.0	17.3~43.4	APL-301B	450	550



## NON-SPARKING / SS / TITANIUM / INSULATED



### MATERIALES / MATERIALS / MATERIAUX

Aleación Cobre-Berilio / Copper-Beryllium Alloy / Alliage Cuivre-Béryllium		
Composición Composition Composition	Be	1.8%-2%
	Ni+Co	0.2%-1.2%
	otros / other / autres	<0.5%
	resto / rest / reste	Cu
Dureza / Hardness / Dureté	283-365 Brinell	
Resistencia a la tracción / Tensile Strength Resistance à la traction	1250 N/mm <sup>2</sup>	



Aleación Aluminio-Bronce / Aluminium-Bronze Alloy / Alliage aluminium-bronze		
Composición Composition Composition	Al	10%-12%
	Ni	4%-6%
	Fe+Mn	<5.8%
	otros / other / autres	<0.5%



## STAINLESS-STEEL TOOLS:



**EGA Master** S.A.  
ART IN INNOVATION  
SPAIN

**Beta**  
ITALY

## MEASURING INSTRUMENTS / CUTTER



Pipe Bender

Ratchet Cable Cutter

Utility Locator

Infrared Thermometer

Inspection Mirror



Inspection Camera

Tachometer

Vibration Meter

CAS- Crane Scale

Master Level





Gauss Meter

Multi-Meter

Clamp meter

Micro-Meter

Dial Gauge



Calibration of Instruments



Feeler Gauge



Vernier callipers



Callipers



## WORK-SHOP TOOLS / CUTTING TOOLS



Boring Head



Jack Screw Set



Bench Vice



Steel Vice Screw Type



Drill Sleeve  
Punches



Casted V-Block



HSS Tool Bits



Diamond Grinder



Alpha-Numeric





Grease Gun

Drum Pump

Bucket Grease Pump

Pipe Bender

Pick-Up Tool/magnetic



Drill Bits/ Hacksaw



TAP & DIE Sets



Carbide Tip Tool



Radial Drill Machine Automatic/Manual  
Cap: 20 to 40mm



## PIN DOT MARKING MACHINE



Table Top machine



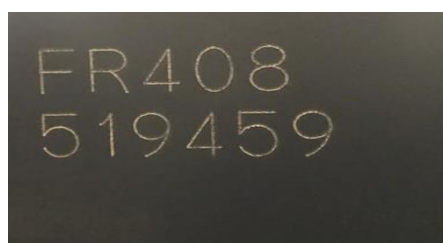
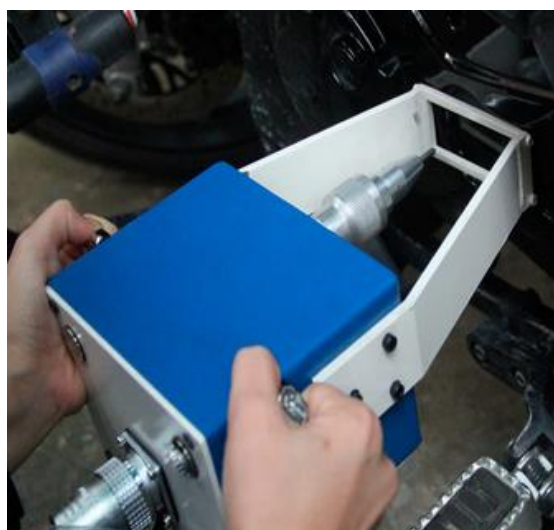
Portable machine

**SPECIAL**

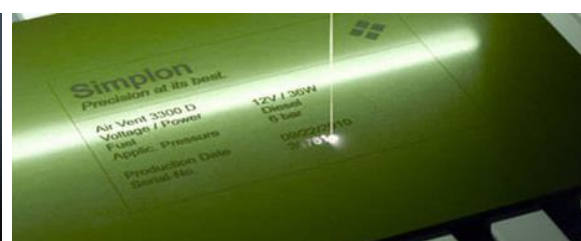


<u>Technical specification</u>	
Marking speed	30~40mm/s. 2-5 characters(2x2mm)/s
Marking depth	0.02~2mm (depends on the different materials)
Marking contents	characters, alphanumeric, date, numbers, serial NO,VIN code etc.
Marking area (mm)	140x80 / 150x90 / 200x150/ 300x200/400x300mm
Up and down lifting height	0—300mm
Materials request	below HRC60 metallic and non-metallic materials (above HRC60 need special stylus)

Power	300W
Work power	AC100~240V±10% 50Hz/60HZ
Inputting air pressure	0.3—0.6MPa
Controller	Windows 7 & XP, 7.5" LCD touch screen Controller
Operation Software	Throx6/7 or KING8



## LASER MARKING MACHINE





## CHEMICAL ETCHING MACHINE



### Features

Standard features include

- Medium power transformer with AC / DC Voltage for Black and White marking.
- Special timer to control the cycle time and etching depth as well.
- Foot pedal control.

### Marking samples



### Specifications

- Medium power transformer with AC/DC Voltage for Black and White marking
- Specially designed with a new unit for medium batch production or medium volume user
- Special timer to control the cycle time and etching depth as well
- Foot pedal control
- High performance
- Cost effective
- Easy operation

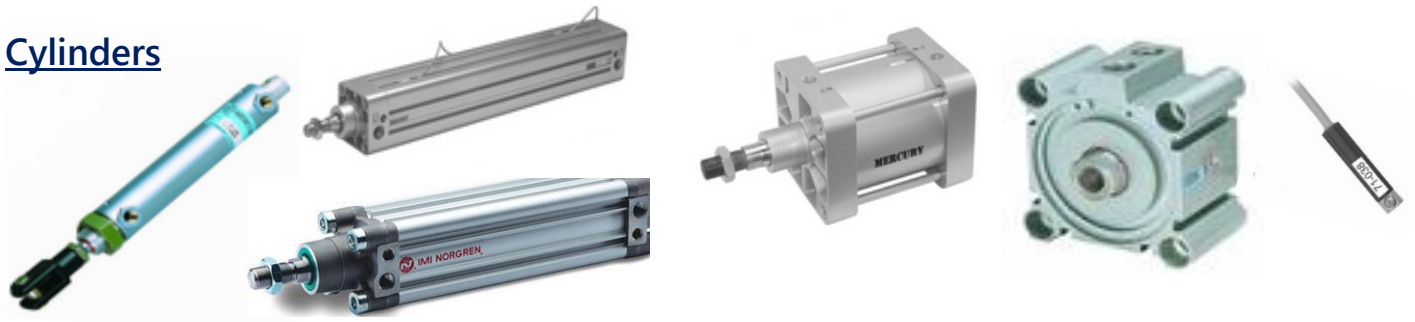


## PNEUMATIC PRODUCTS / AUTOMATION

### Solenoid Valves & Flow Control



## Cylinders



## Fittings / PU Tubes



## Fluid Automation



Pilot Operated Solenoid Valve

Diaphragm Valve

Y-Type Pneumatic Valve

Jet Type Dust Collector Valve

## Toggle Clamps



## WORKSHOP / MILLING M/c / CUTTERS



Concave/Convex Cutter



Band-saw Blade Cutter



Slitting Saw



Staggered Teeth



Gear Hobbing Cutter

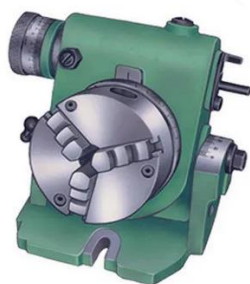


Taper / Parallel Mandrel



Industrial Vice

## Universal Dividing Head for Milling Machines



## COOLANT PUMP



Size	Type		Immersion Depth (mm)	Outlet Connection	PCD to Mount the Pump (mm)	Min. Capacity to Pump Waret Against a Head of in ltr/min		Approx Weight (kg)
Virak 0.10	1/120	0.100	120	3/4" or 1/2" BSP	115	36	30	7.5
	1/170	0.100	170	3/4" or 1/2" BSP	115	36	30	8
Virak 0.25	2/220	0.250	220	3/4" or 1/2" BSP	115	70	63	12.5
Virak 0.50	3/220	0.500	220	1" BSP	160	150	120	21
Virak 1.00	4/270	1.000	270	1" BSP	160	280	240	30



## Other PRODUCTS / SERVICES

**Tool Management with Software**

**Embedded System & Automation**

**Customized Tools**

**Non- Standard Sockets / Spanners etc.**

**Impact Sockets / Castellated Sockets**



**Torque Wrench Calibration**

**Measuring Instrument Calibration**

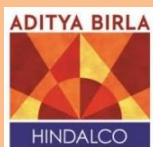
**Pipe Line Projects – Air, Water, Oxygen line etc.**

**Fuel Dispensing Equipments**



# SAFETY RULES ARE YOUR BEST TOOLS

Our Esteemed Clients



**UltraTech**  
CEMENT  
The Engineer's Choice



